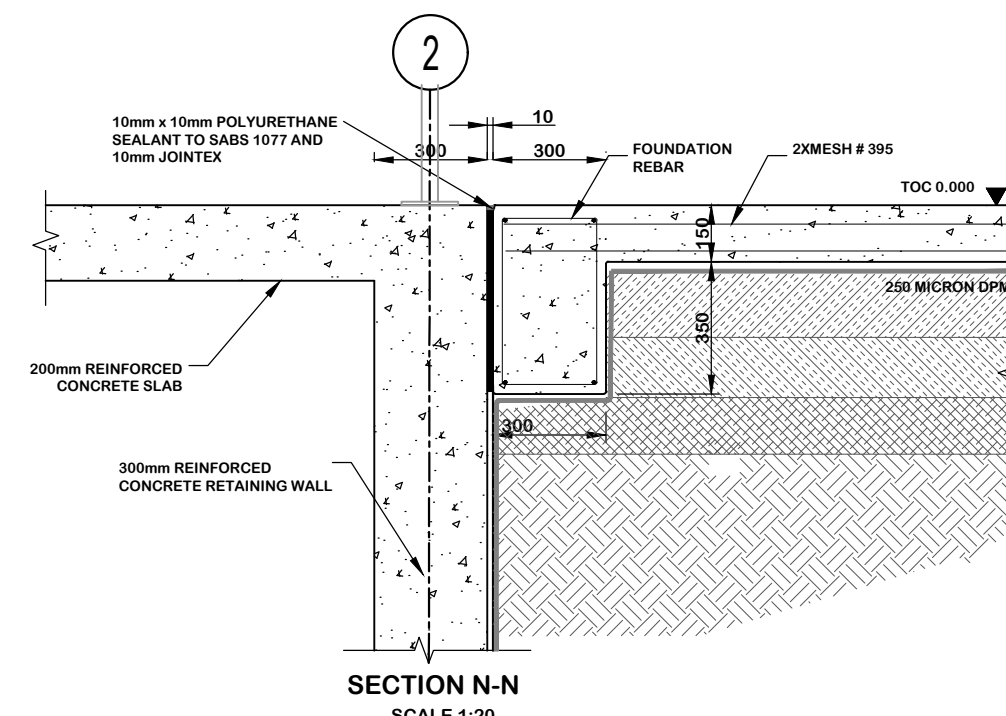
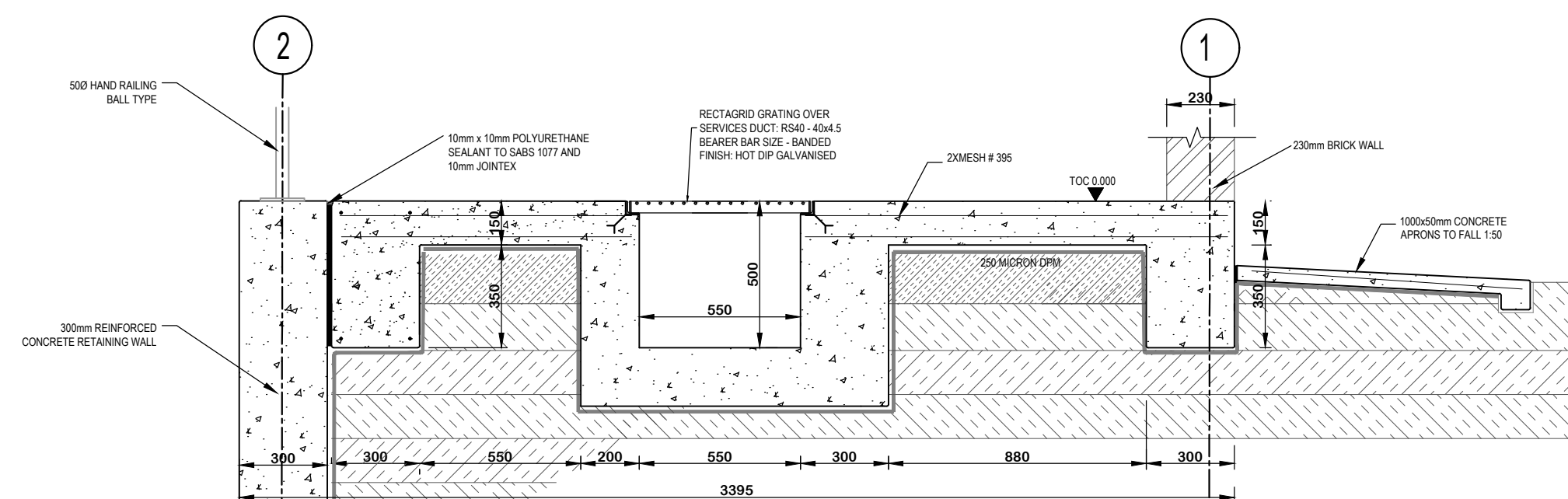


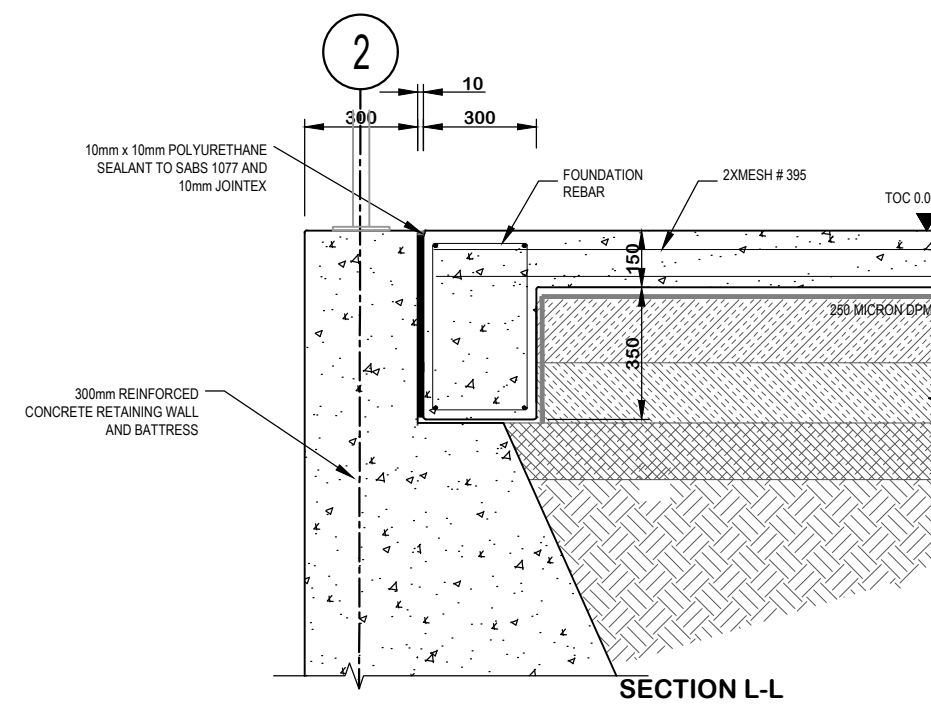
**PUMP HOUSE GROUND FLOOR SURFACE BED**  
SCALE 1:100



SECTION N-N  
SCALE 1:20



**SECTION K-K**  
**SCALE 1:20**




**SECTION**  
**SCALE 1:**

|  |  |       |  |             |   |             |                |
|--|--|-------|--|-------------|---|-------------|----------------|
|  |  |       |  |             | Project:<br>JW144006 - LINBRO PARK TOWER<br>(WITH ASSOCIATED WORKS)           |             |                |
|  |  |       |  |             | Description:<br>PUMP HOUSE GROUND FLOOR<br>CONCRETE AND SURFACE BED<br>LAYOUT |             |                |
|  |  |       |  |             | Issued For: TENDER  |             |                |
|  |  | Size: |  | Scale:      |   | Sheet No:   | Original Date: |
|  |  | A1    |  | As Shown    |   | 7 OF 11     | SEPT 2023      |
|  |  |       |  | Project No: |   | Drawing No: |                |
|  |  |       |  | C01486      |   | PS-03       |                |
|  |  |       |  |             |   | Revision:   |                |
|  |  |       |  | T0          |   |             |                |

|           |      |         |     |      |
|-----------|------|---------|-----|------|
| No        | Date | Details | Chd | Appd |
| Revisions |      |         |     |      |

Client:



**Johannesburg Water**

---

JOHANNESBURG WATER

Turbine Hall,  
65 Nkomo Plaza Street,  
Newtown, Johannesburg

THESE NOTES SERVE AS AN ADDENDUM TO THE SPECIFICATION IN THE BILL OF QUANTITIES (BOQ). IN THOSE CASES WHERE THE BOQ SPECIFICATIONS DIFFER FROM THESE NOTES, THESE NOTES SHALL TAKE PREFERENCE

ON ORIGINAL

Engineer:

|                              |                            |                           |
|------------------------------|----------------------------|---------------------------|
| T Chikwata Pr Eng (20140009) |                            |                           |
| Drawn By:<br>B.MANYAUU       | Designed By:<br>T.Chikwata | Checked By:<br>T.Chikwata |
| Signature:<br>               | Signature:<br>             | Signature:<br>            |
| Date:<br>APRIL 2023          | Date:<br>APRIL 2023        | Date:<br>APRIL 2023       |

|  |  |
|--|--|
| <p><b>CONCRETE NOTES :</b></p>   |  |
| <p>1. <b>SETTING OUT AND GENERAL</b></p>   | <p>2.2 NO FOUNDATIONS ARE TO BE CAST IN FILL MATERIAL. A 50mm THICK LAYER OF 10MPa / 19mm BLINDING CONCRETE IS TO BE</p> |
| <p>1.1 <b>SETTING OUT AND GENERAL</b></p>  | <p>CAST UNDER ALL REINFORCED BASES, REINFORCED STRUT FORMS AND GROUND BEAMS.</p>   |
| <p>1.2 <b>DRAWING SHEET</b> IS TO BE READ IN CONJUNCTION WITH ARCHITECT'S DRAWINGS.</p>  | <p>3.1 ANY OVER EXCAVATIONS ARE TO BE MADE GOOD WITH 10MPa / 19mm CONCRETE AT THE CONTRACTOR'S EXPENSE.</p>              |
| <p>1.3 <b>ALL FOUNDATION ARE</b> ARE TO BE CHECKED ON SITE BEFORE WORK IS PUT IN HAND.</p>   | <p>4.1 <b>REINFORCING</b> IS TO BE DONE IN ACCORDANCE WITH THE CONTRACT MIX DESIGNS FOR CONCRETE.</p>                    |
| <p>1.4 <b>REPORT DISCREPANCIES</b> TO ARCHITECT OR ENGINEER</p>  | <p>5.1 <b>CONCRETE</b> IS TO BE COMPACTED IN LAYERS IN ACCORDANCE WITH THE PROJECT SPECIFICATIONS.</p>                   |
| <p>1.5 <b>DRAWINGS MUST NOT</b> BE USED TO SCALE OFF USE ONLY WRITTEN DIMENSIONS. CONTACT THE ENGINEER OR ARCHITECT WHERE CLARITY IS SOUGHT.</p>   | <p>6.1 <b>TESTING</b> OF CONCRETE TO BE DONE IN ACCORDANCE WITH THE PROJECT SPECIFICATIONS.</p>                          |
| <p>1.6 <b>FOR SETTING OUT</b> OF ALL SETTING OUT POINTS AND DATUM LEVELS: REFER TO SURVEY INFORMATION AND ARCHITECT'S DRAWINGS.</p>  | <p>7.1 <b>CONCRETE</b> CHARACTERISTIC 28 DAY STRENGTH: 10MPa / 19mm</p>  |
| <p>1.7 <b>STRUCTURAL WORK</b> IS TO BE CARRIED OUT IN ACCORDANCE WITH THE PROJECT SPECIFICATION AND THE RELEVANT S.A.N S.</p>  | <p>8.1 <b>REINFORCING</b> IS TO BE DONE IN ACCORDANCE WITH THE PROJECT SPECIFICATIONS.</p>                               |
| <p>1.8 <b>ALL CONCRETE</b> ARE TO BE CARRIED OUT TO BE DONE IN ACCORDANCE WITH S.A.N S. 1200G AND EARTHWORKS IN ACCORDANCE WITH S.A.N S. 1200D.</p>  | <p>9.1 <b>CONCRETE</b> IS TO BE CURED BY KEEPING SURFACES CONTINUOUSLY DAMP FOR AT LEAST 5 DAYS FOLLOWING CASTING.</p>   |
| <p>1.9 <b>CONSULT</b> RELEVANT AGENCIES, MECHANICAL, ELECTRICAL &amp; PLUMBING DRAWINGS AND DETAILS AS RELEVANT FOR DRAINAGE, STORMWATER OUTFALLS, RWPODS AND HOLES AND RELEVANT DETAILS. NO HOLDING ARE TO BE CORED WITHOUT ENGINEERS WRITTEN APPROVAL.</p> | <p>10.1 <b>CONCRETE</b> IS TO BE CURED BY KEEPING SURFACES CONTINUOUSLY DAMP FOR AT LEAST 5 DAYS FOLLOWING CASTING.</p>  |
| <p>2.0 <b>FOUNDATIONS</b></p>  | <p>11.1 <b>CONCRETE</b> IS TO BE CURED BY KEEPING SURFACES CONTINUOUSLY DAMP FOR AT LEAST 5 DAYS FOLLOWING CASTING.</p>  |
| <p>2.1 <b>ALL FOUNDATION EXCAVATIONS</b> TO BE INSPECTED AND APPROVED IN WRITING BY THE ENGINEER BEFORE CONCRETE IS</p>  | <p>12.1 <b>CONCRETE</b> IS TO BE CURED BY KEEPING SURFACES CONTINUOUSLY DAMP FOR AT LEAST 5 DAYS FOLLOWING CASTING.</p>  |

PERMISSIBLE DEVIATION DEGREE OF ACCURACY CLASS II  
UNLESS SPECIFIED OTHERWISE.

CONCRETE CUBE TEST RESULTS TO BE SUBMITTED TIMELY.  
TO ENGINEER FOR PERUSAL, RECORDS, COMMENT AND  
APPROVAL.

4. REINFORCEMENT

4.1 CHARACTERISTICS STRENGTH:

|                  |                      |
|------------------|----------------------|
| MILD STEEL       | 250N/mm <sup>2</sup> |
| HIGH YIELD STEEL | 450N/mm <sup>2</sup> |

4.2 REINFORCEMENT TO BE CONCRETE CIP APPROVED BY  
ENGINEER BEFORE ANY CONCRETE IS CAST. 48 HOURS  
WATER CURE TO BE GIVEN TO ENGINEER BEFORE TIME OF  
INSPECTION.

LAP LENGTH TO REINFORCING TO BE MINIMUM 50 x SMALLER  
DIAMETER UNLESS OTHERWISE STATED.

MESH REINFORCEMENT REFERENCE 245 TO BE PLACED IN SLAB  
TOP (MINIMUM LAPS + 300mm UNLESS OTHERWISE NOTED  
AND MUST BE PLACED PARTICULAR CARE TO ENSURE  
THAT THE SPECIFIED COVER TO ALL REINFORCEMENT HAS BEEN  
ATTAINED THROUGHOUT BEFORE THE ENGINEER IS CALLED TO  
SIGN OFF FOR INSPECTION AND REINFORCEMENT.

COVER TO REINFORCEMENT:

|                    |      |
|--------------------|------|
| STRIP FOOTINGS:    | 50mm |
| COLUMNS AND BEAMS: | 30mm |
| SUSPENDED SLABS:   | 30mm |
| SUSPENDED DEAFS:   | 30mm |

|     |  |                         |
|-----|--|-------------------------|
| 4.7 | CONTRACTOR IS TO CONDUCT HIS OWN INSPECTION OF REINFORCEMENT BEFORE CALLING THE ENGINEER FOR INSPECTION. |                         |
| 5.0 | FORMWORK AND PROPPING  |                         |
| 5.1 | STRIPPING TIMES FOR:   |                         |
|     | COLUMN AND WALL SHUTTERING: 1.5 DAYS.  |                         |
|     | BEAM SHUTTERING: 7 DAYS IN HOT WEATHER.  |                         |
|     | 12 DAYS IN COLD WEATHER.   |                         |
|     | FLAT SLABS:  |                         |
|     | 4 DAYS IN HOT WEATHER  |                         |
|     | 7 DAYS IN COLD WEATHER   |                         |
| 5.2 | PROPPING TIMES FOR:  |                         |
|     | SLABS AND BEAMS:   | 14 DAYS IN HOT WEATHER  |
|     |  | 21 DAYS IN COLD WEATHER |
|     | CANTILEVER SLABS AND BEAMS: 21 DAYS  |                         |
|     | (SUBJECT TO CURB TEST RESULTS BEING SUBMITTED TIMELY.) TO ENGINEER FOR APPROVAL.)                        |                         |
|     | DO NOT PROPE OF SUSPENDED ELEMENTS UNTIL INSTRUMENTED.   |                         |
| 5.3 | BY ENGINEER.   |                         |
|     | CONCRETE FINISHES: UNLESS NOTED OTHERWISE  |                         |
|     | CUMULATIONS AND SLABS: OFF SHUTTER   |                         |
|     | BEAMS AND SLAB TOPS: OFF SHUTTER   |                         |
|     | TOP OF SUSPENDED SLABS: STEEL FLOAT  |                         |
|     | SURFACE BEDS: POWER FLOAT  |                         |
| 5.4 | SIDES OF GROUND BEAMS TO BE SHUTTERED.   |                         |

[illegible][illegible]